

USER INSTRUCTIONS

Dear Visionaries,

Now you are operating your own server, getting back your data control and independence. Exactly that is Protonet' vision, and what we exist for.

With the purchase of your personal server you are supporting our idea, the local production, and our soft- and hardware engineering. This is awesome and we thank you for that! The step that you have taken is an important one towards freeing the internet, and making it versatile and fair again.

In order for you to enjoy this newly acquired independence without any issues, we have a few instructions for the setup and maintenance of your personal server. Furthermore, we want to use this opportunity to explain some fundamental thoughts towards the design and use of Protonet.

The future belongs to you!

With Innovative Regards,



Ali Jelveh (CRO)



Thomas Reimers (CMO)



Christopher Blum (CTO)

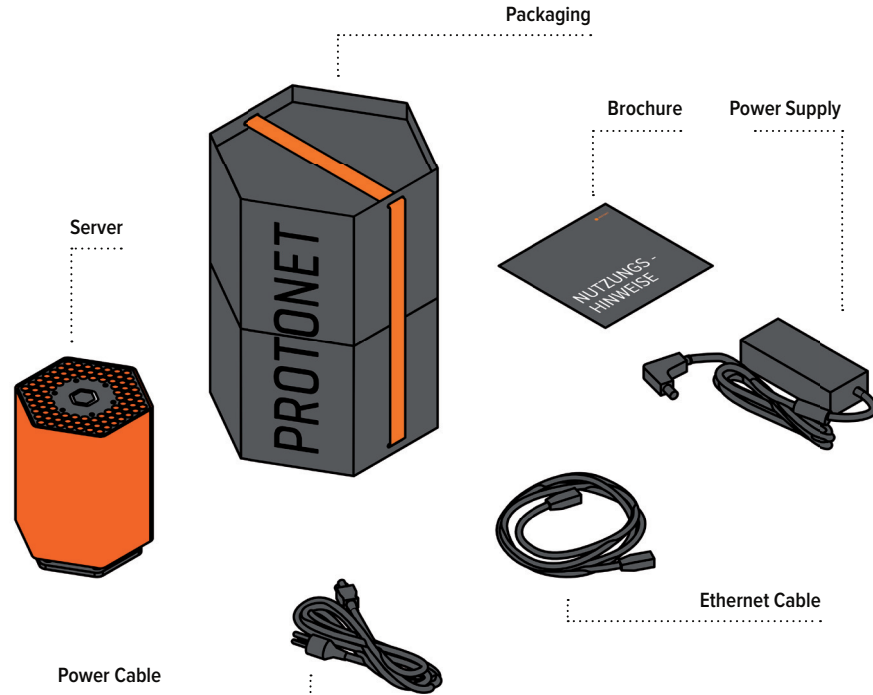


David Burkhardt (Productdesigner)

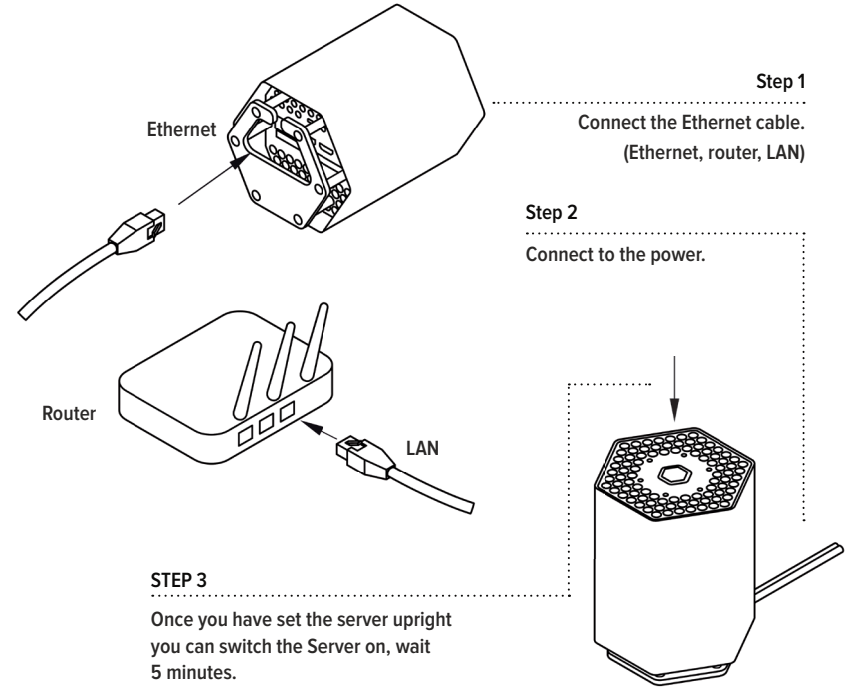
CONTENTS PAGE

Package Content	Page 06
Let's Go!	Page 07
Support	Page 09
Material	Page 10
Production.	Page 11
Energy Consumption	Page 12
Hardware Adjustments.....	Page 13
User Instructions.....	Page 14
Please Avoid	Page 16
Battery Disposal	Page 17

PACKAGE CONTENT



LET'S GO!



LOS GEHT'S!

STEP 4

Connect your computer to the Wi-Fi “**Protonet**” and use the password **Changeme!123**

STEP 5

Start your web browser and enter the following web address:
http://10.42.0.1/

STEP 6

Login using the username “**admin**”. Password: **Changeme!123**

STEP 7

Inform your colleagues, friends and other users and you can start.

If your Maya is still unable to connect to the internet after the initial set up process, the problem most probably lies with your firewall settings.

You can find the solution to this in the Support Community
<https://support.protonet.info>

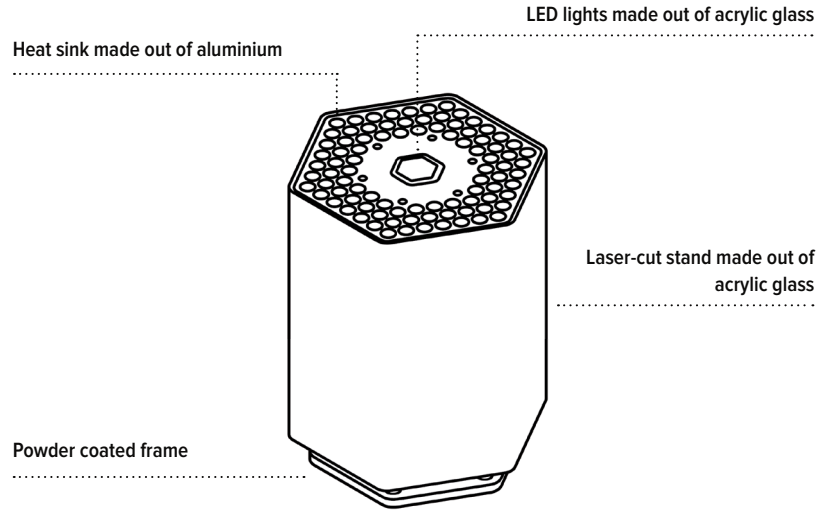
SUPPORT

Should any questions or problems arise by this point:

In the Support Community you will find previously answered questions along with having the opportunity to exchange thoughts with other users. For personal cases you can create a Support-Ticket through the contact sheet.

Our Support-Team offers regular training sessions and introductory workshops to which you are sincerely invited to. Once you have registered yourself in our Support Community under **<https://support.protonet.info>**, you will find the respective dates of these sessions.

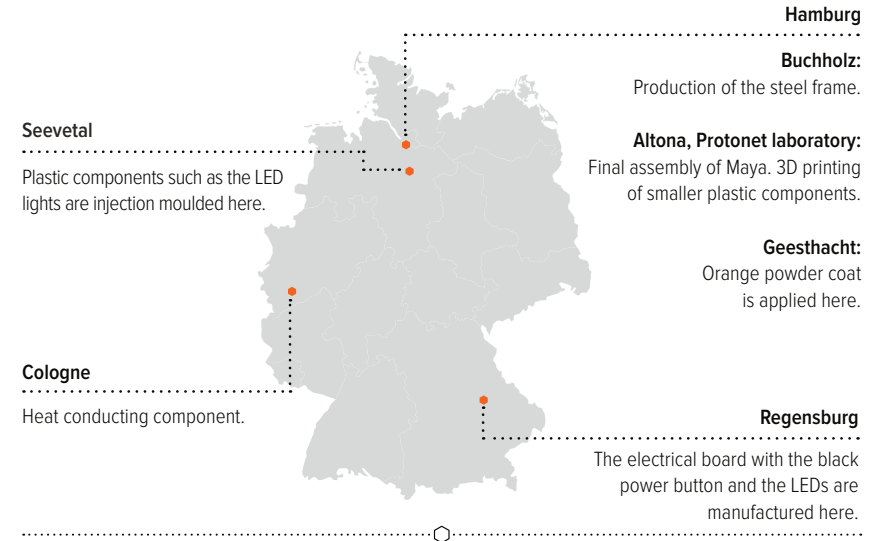
MATERIAL



We chose to use steel for the frame of Protonet because it is the optimal material for mechanical stability, electrical shielding and heat conductivity. We place great

importance on easy recyclability and, therefore, one fails to find the use of unsustainable varnish and glue.

PRODUCTION



The frame made out of steel allows us to produce the product locally, and the stamping that is used for the steel and aluminium parts requires little energy consumption. Short

delivery distances and personal relationships assure for optimal quality, as well as constant development with reduced reaction times.

ENERGY CONSUMPTION



9 Watts

● Normal operation



16 Watts

● Operating under full-load

It is important for us to keep the energy consumption at a minimal level. Therefore, your Maya will only require approximately 9 Watts under normal operating conditions.

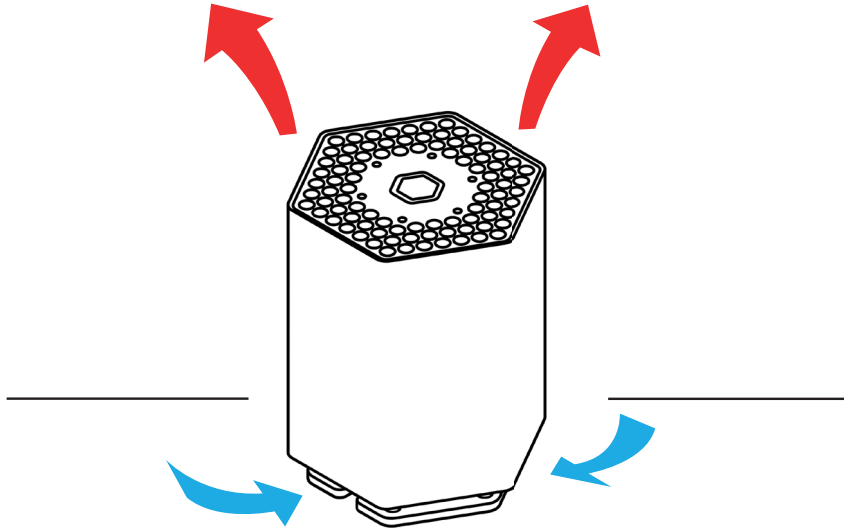
When powering your server please use the 19V / 45W power supply unit that is provided within the packaging.

HARDWARE ADJUSTMENTS



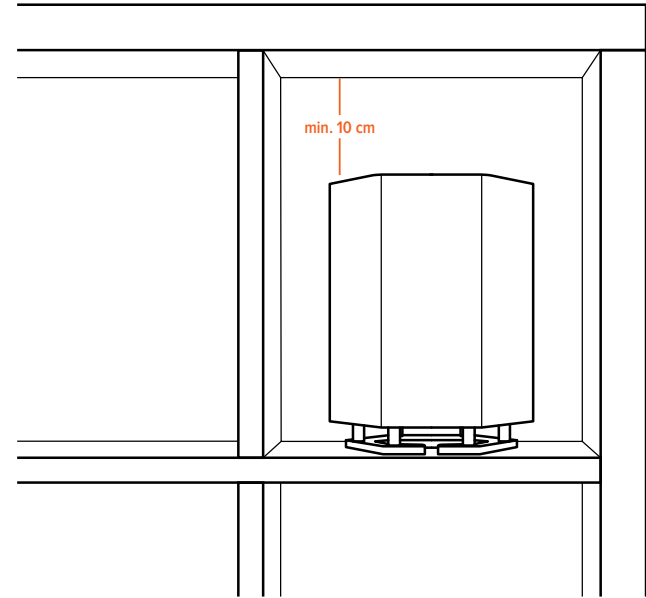
Please be aware that any adjustments made to the hardware are at one's own risk. We do not offer support services for such cases. If any adjustments and changes are made to the hardware and frame, the guarantee and support services become void. Our operating software has been solely tested on our hardware configuration and, therefore, we cannot guarantee an optimal use of the software on any changed configuration.

USER INSTRUCTIONS



As fans are often loud, wear out, and require energy, we decided to equip your Maya with a passive cooling system. The intake of air through the heat sink keeps the frame cool

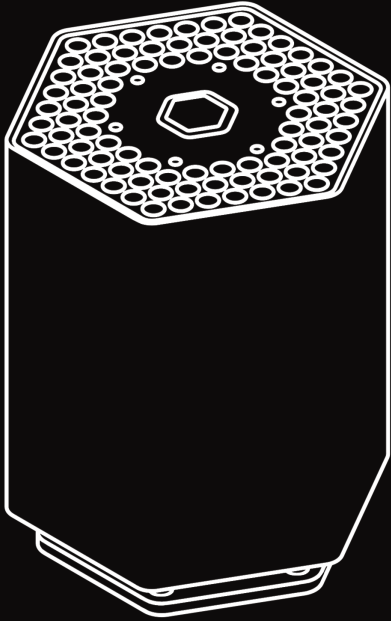
and, therefore, the server does not need a fan. This convection effect ensures that your Maya is always at the right operating temperature.



In order for the passive cooling system to work it is important to note that, your Maya needs to stand upright and is not lying on its side. In case your personal server is placed in

a shelf, make sure that you allow a minimum distance of 10 cm.

PLEASE AVOID



Direct sunlight and high temperatures
(the permissible operating temperature:
room temperature 10-35°)



High levels of humidity
(permissible humidity: 20-80%)

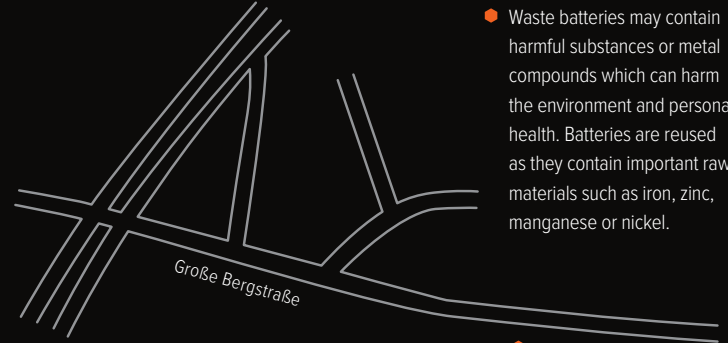
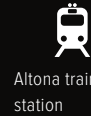


Unusual pressure conditions
(Atm. pressure: -15.0 up to max. 300m)



Warning! Protonet is not a toy. Please
store your personal server out of reach
of children and curious animals.

BATTERY DISPOSAL



- Waste batteries may contain harmful substances or metal compounds which can harm the environment and personal health. Batteries are reused as they contain important raw materials such as iron, zinc, manganese or nickel.



Protonet GmbH
Große Bergstraße 160
22767 Hamburg
Germany



Your Maya contains a 3V-lithium-battery (type CR 2032), which cannot be disposed of in domestic waste. Users are legally required to bring their waste batteries to a suitable

collection point. We will dispose of the waste batteries free of charge.

Protonet GmbH
Große Bergstraße 160
22767 Hamburg
Germany

